



RAYTOWN INDUSTRIAL BUILDING

5631-5633 Raytown Road, Raytown, Missouri



LEASE RATE: \$7,000/MONTH NNN | 12,000 SF BUILDING

DEMOGRAPHICS

	1 mile	3 miles	5 miles
Estimated Population	8,285	54,810	147,798
Avg. Household Income	\$85,606	\$83,266	\$79,624

- Zoned industrial
- Offices and warehouse
- Dock high
- Drive in
- 3 Phase power



CLICK HERE TO VIEW MORE
LISTING INFORMATION

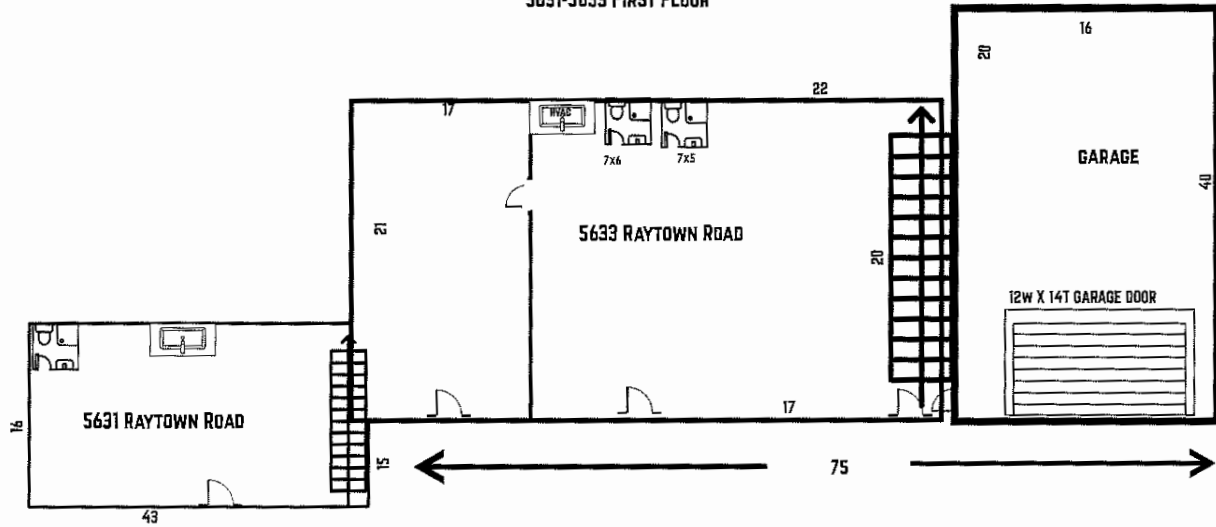
For More Information Contact:

BILL MAAS, CCIM | 816.412.7392 | bmaas@blockandco.com

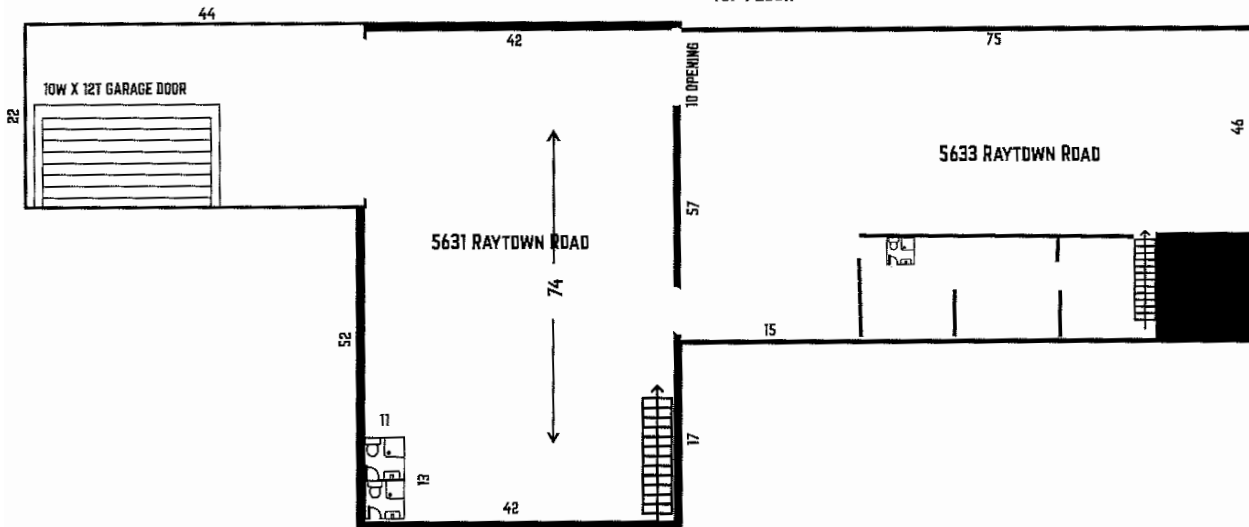
Exclusive Agent

FLOOR PLANS

5631-5633 FIRST FLOOR



5631-33 RAYTOWN ROAD
TOP FLOOR

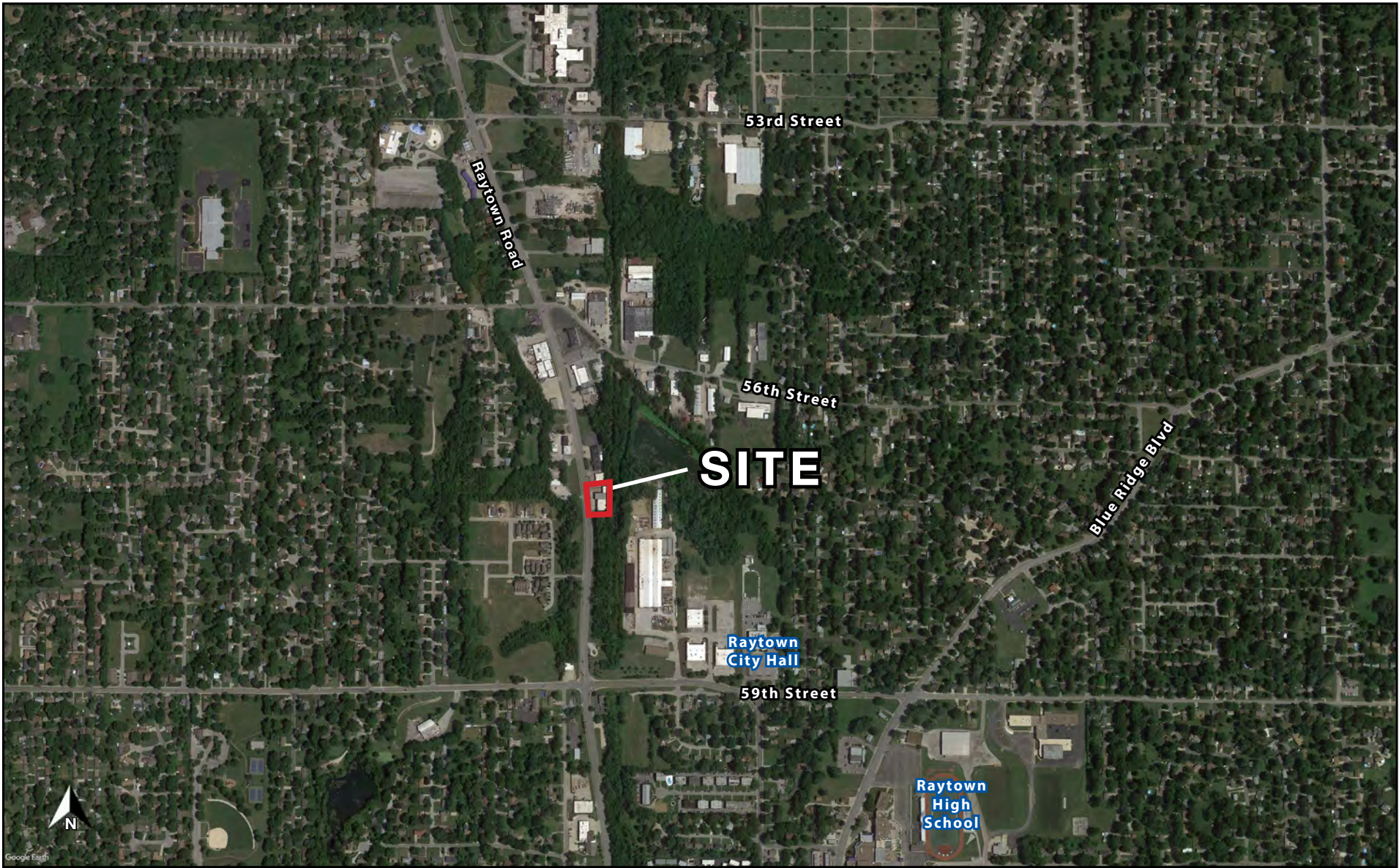




RAYTOWN INDUSTRIAL BUILDING

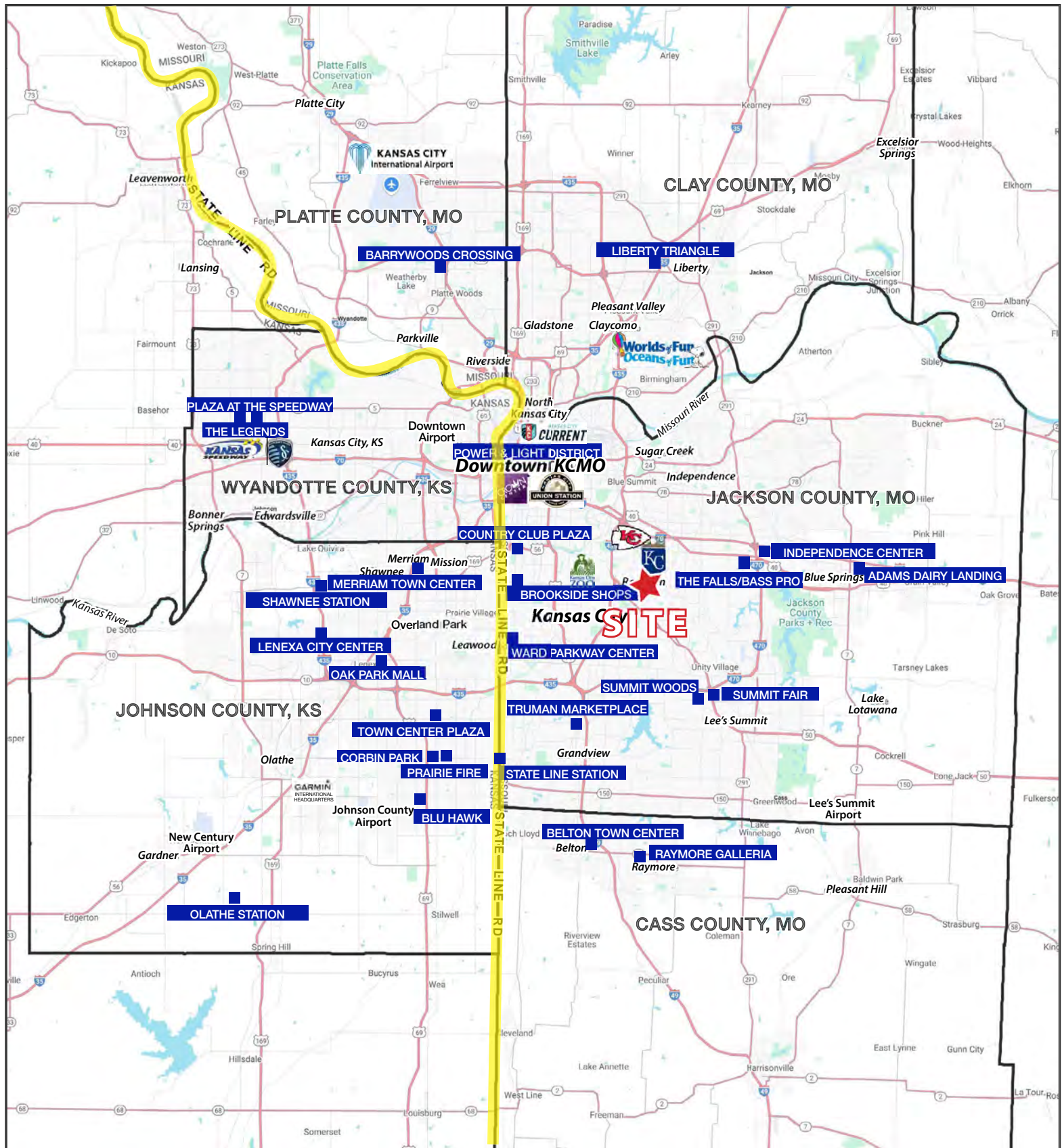
5631-5633 Raytown Road, Raytown, Missouri

AERIAL



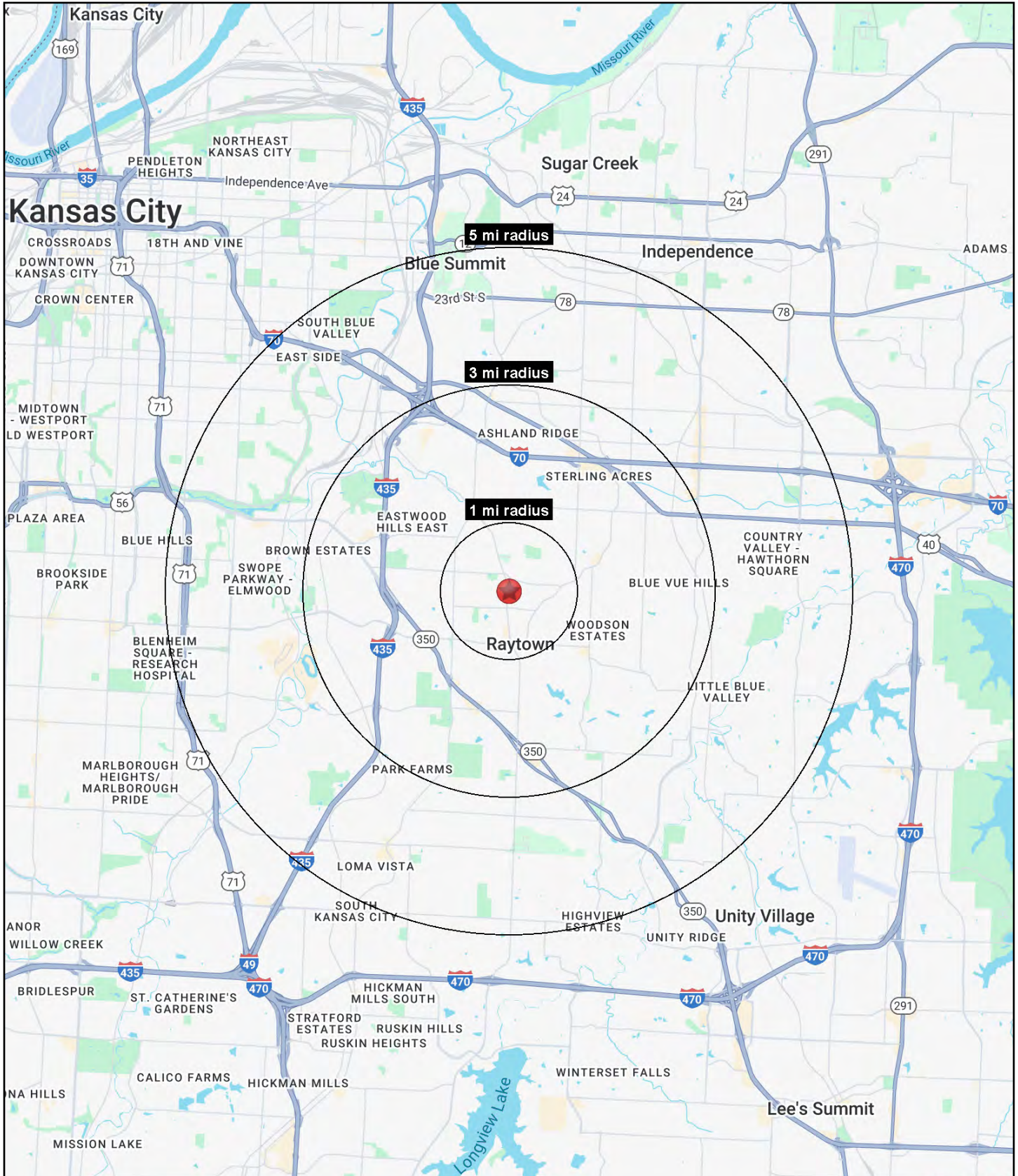
RAYTOWN INDUSTRIAL BUILDING

5631-5633 Raytown Road, Raytown, Missouri



RAYTOWN INDUSTRIAL BUILDING

5631-5633 Raytown Road, Raytown, Missouri





RAYTOWN INDUSTRIAL BUILDING

5631-5633 Raytown Road, Raytown, Missouri

5631-5633 Raytown Road Raytown, MO 64133	1 mi radius	3 mi radius	5 mi radius
Population			
2025 Estimated Population	8,285	54,810	147,798
2030 Projected Population	8,206	54,563	146,625
2020 Census Population	8,646	55,356	147,668
2010 Census Population	8,328	54,283	144,598
Projected Annual Growth 2025 to 2030	-0.2%	-	-0.2%
Historical Annual Growth 2010 to 2025	-	-	0.1%
2025 Median Age	40.0	39.3	38.9
Households			
2025 Estimated Households	3,624	23,280	62,347
2030 Projected Households	3,611	23,340	62,308
2020 Census Households	3,612	23,572	62,225
2010 Census Households	3,373	22,683	60,195
Projected Annual Growth 2025 to 2030	-	-	-
Historical Annual Growth 2010 to 2025	0.5%	0.2%	0.2%
Race and Ethnicity			
2025 Estimated White	55.8%	55.2%	50.4%
2025 Estimated Black or African American	32.7%	32.7%	36.8%
2025 Estimated Asian or Pacific Islander	1.0%	1.4%	1.4%
2025 Estimated American Indian or Native Alaskan	0.4%	0.4%	0.5%
2025 Estimated Other Races	10.1%	10.3%	11.0%
2025 Estimated Hispanic	9.8%	10.1%	10.8%
Income			
2025 Estimated Average Household Income	\$85,606	\$83,266	\$79,624
2025 Estimated Median Household Income	\$68,723	\$65,239	\$61,619
2025 Estimated Per Capita Income	\$37,552	\$35,447	\$33,678
Education (Age 25+)			
2025 Estimated Elementary (Grade Level 0 to 8)	1.4%	2.2%	2.6%
2025 Estimated Some High School (Grade Level 9 to 11)	7.4%	5.0%	6.3%
2025 Estimated High School Graduate	34.9%	34.3%	35.2%
2025 Estimated Some College	26.5%	25.0%	25.4%
2025 Estimated Associates Degree Only	6.9%	10.1%	8.9%
2025 Estimated Bachelors Degree Only	15.4%	15.1%	13.9%
2025 Estimated Graduate Degree	7.5%	8.2%	7.7%
Business			
2025 Estimated Total Businesses	358	1,770	4,307
2025 Estimated Total Employees	3,363	16,345	39,589
2025 Estimated Employee Population per Business	9.4	9.2	9.2
2025 Estimated Residential Population per Business	23.1	31.0	34.3

©2025, Sites USA, Chandler, Arizona, 480-491-1112 Demographic Source: Applied Geographic Solutions 5/2025, TIGER Geography - RS1